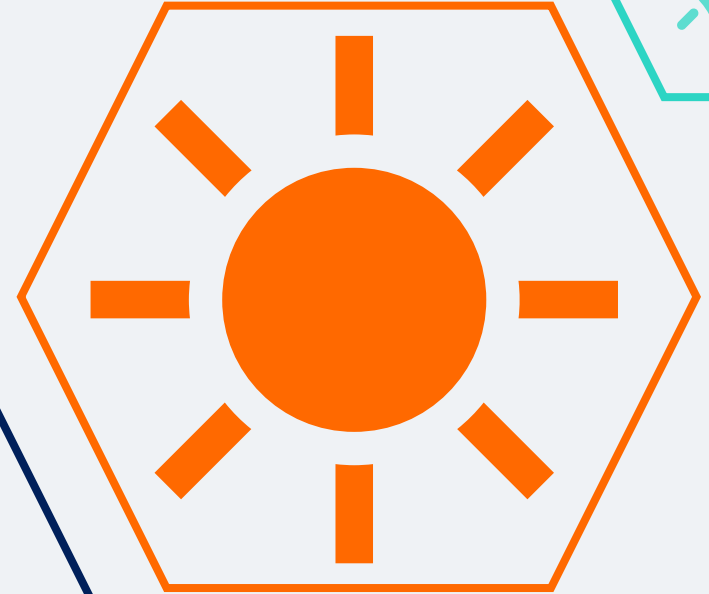
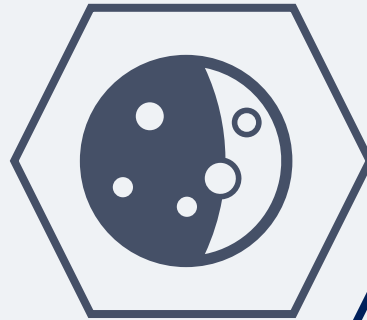
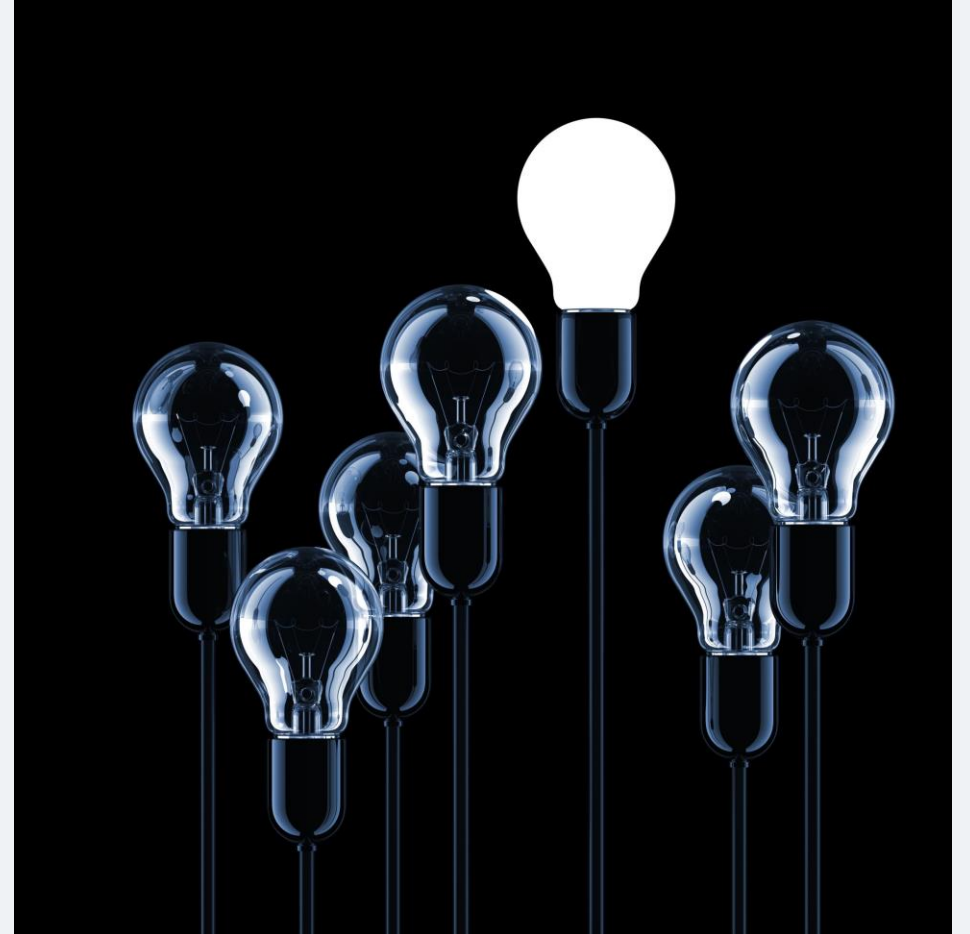


Exploring Light!



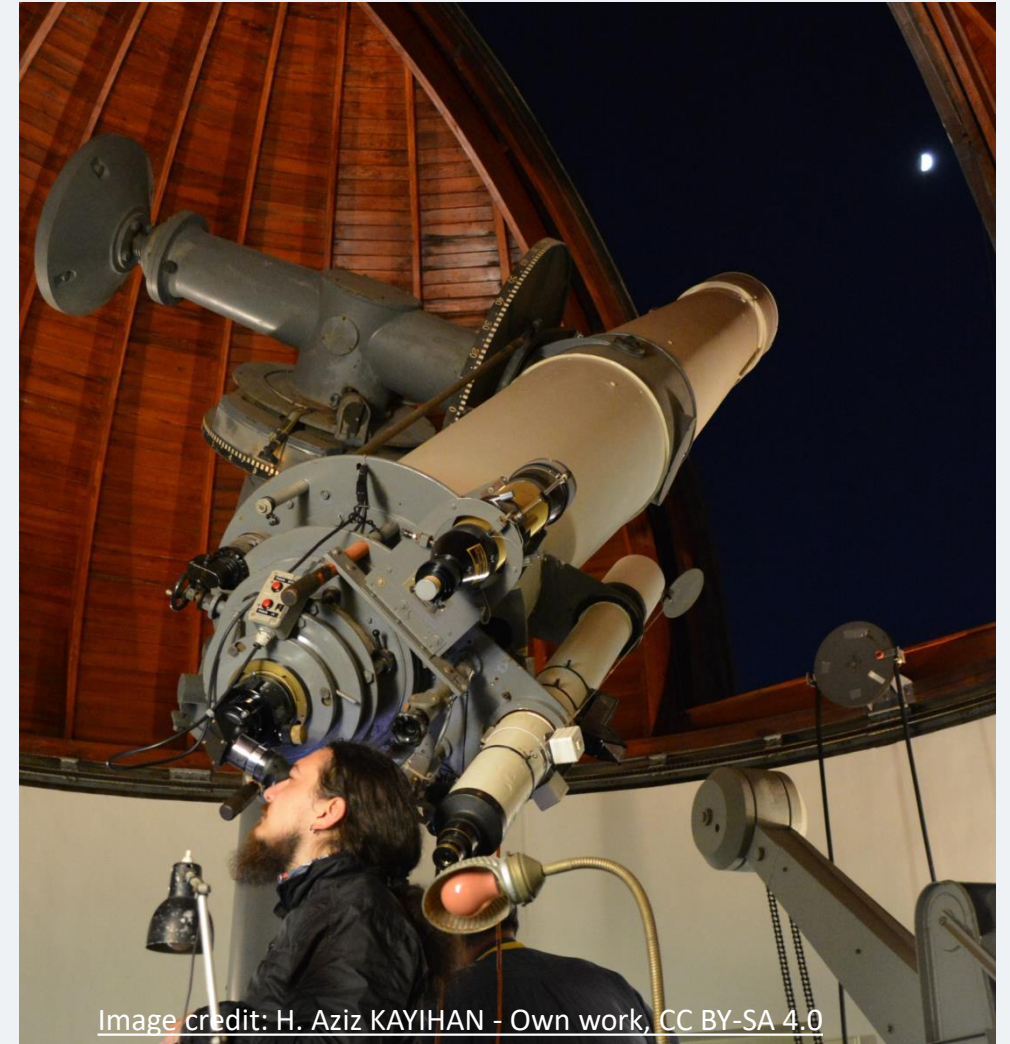
Light – what you need to know

- Light is form of energy.
- Light travels in straight lines.
- We see objects because they emit light or reflect light.
- Some materials are better at reflecting light than others.
- When light from an object reaches our eye, we can see it.



What is this object?

What is it used for?



What is this object?

A telescope

What is it used for?

*Seeing distant objects
in the night sky*



Image credit: H. Aziz KAYIHAN - Own work, CC BY-SA 4.0

- Light travels from an object in space.
- It enters the telescope and travels down the telescope to reach the observer's eye.
- The observer's eye can see the distant object.



Image credit: H. Aziz KAYIHAN - Own work, CC BY-SA 4.0

Where does the light reflected by the Moon enter the telescope?

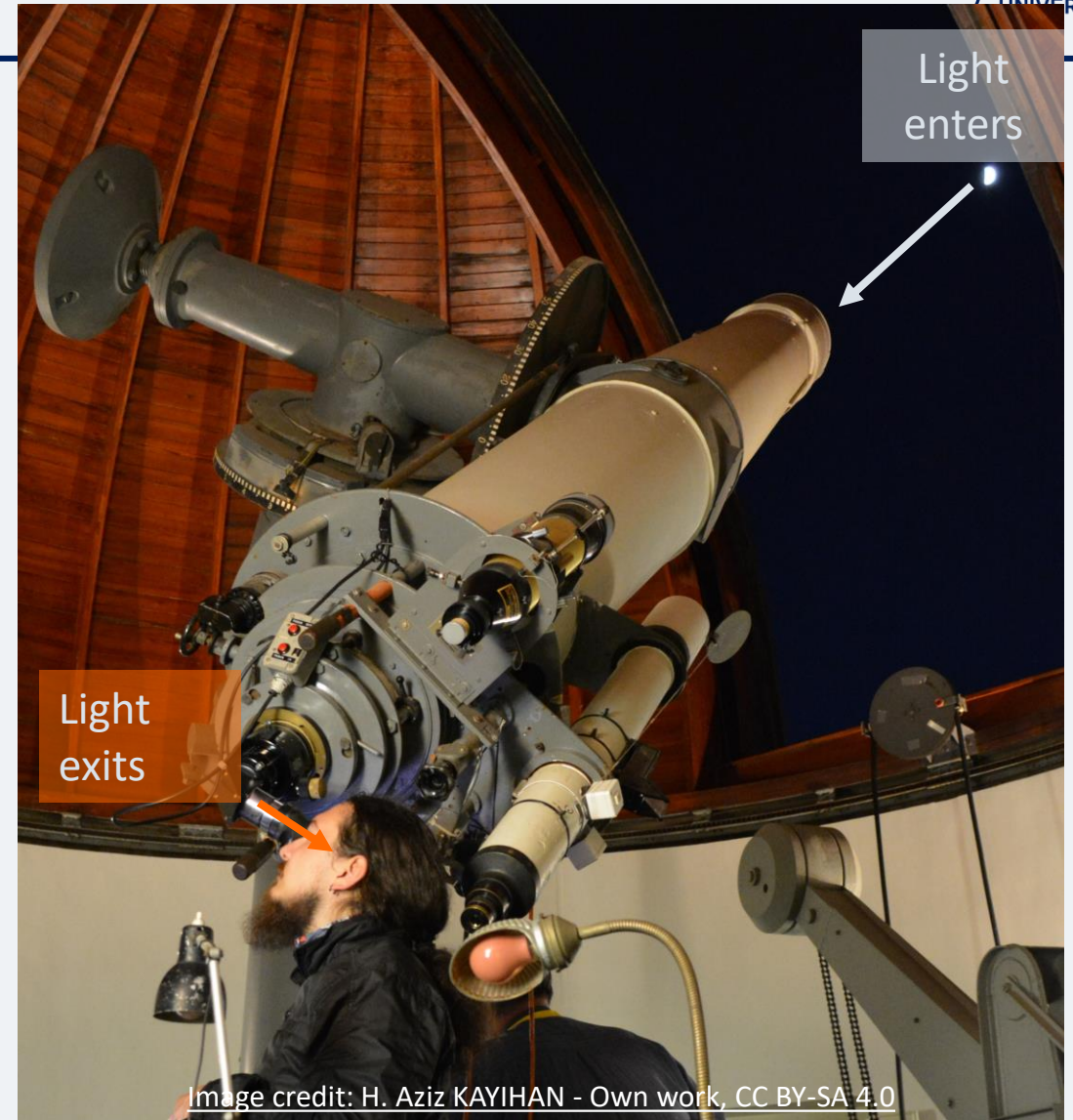
Where does the light leave the telescope?



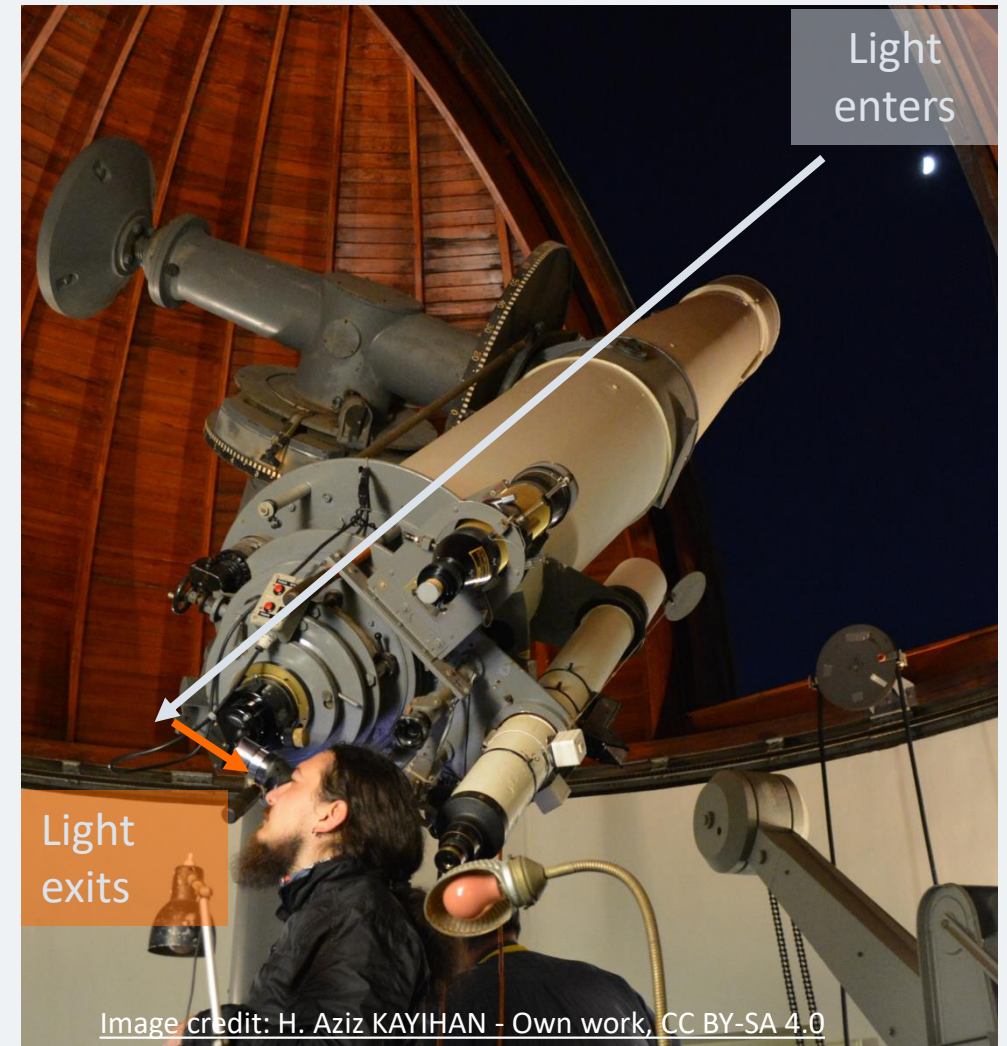
Image credit: H. Aziz KAYIHAN - Own work, CC BY-SA 4.0

Where does the light reflected by the Moon enter the telescope?

Where does the light leave the telescope?



The light must change
direction inside the
telescope!



Which of these objects, do you think is used to change the path of light in a telescope?

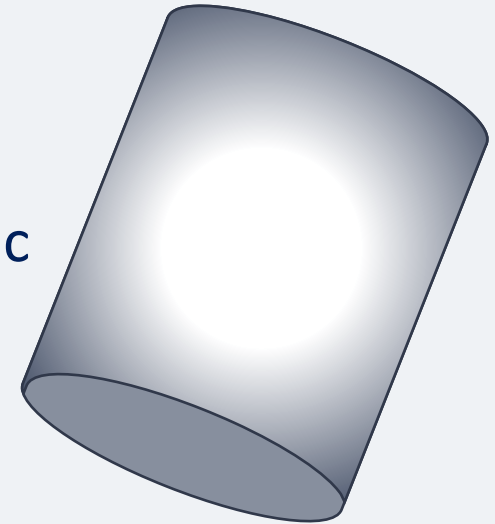
Mirror



Paper

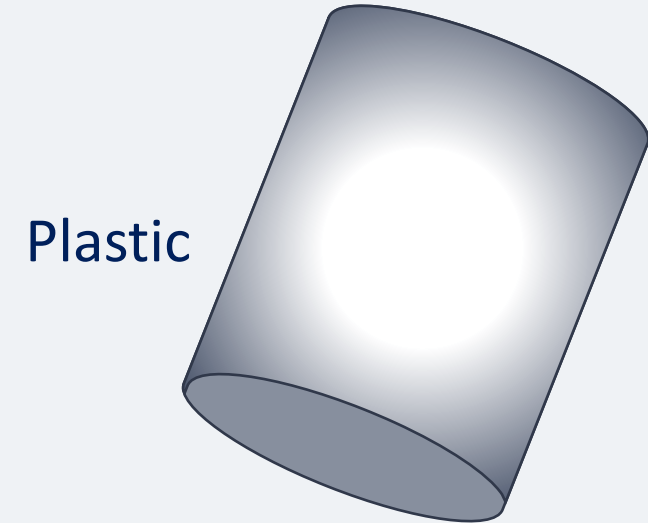
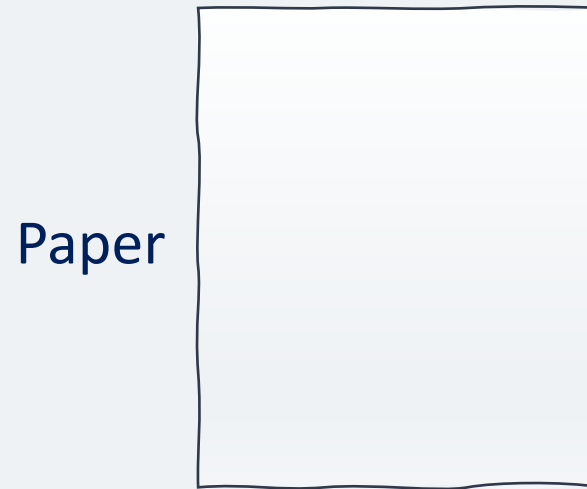


Plastic



What property of that objects makes it the best choice?

Which of these objects, do you think is used to change the path of light in a telescope?



What property of that objects makes it the best choice?

It is the shiniest, which makes it the most reflective.

Most telescopes use mirrors to reflect light into the eyepiece.

